

### 53 Park Terrace Gilberton SA

1  1 

This stunning ground floor apartment is stylish and superbly located! As you enter into this spacious apartment you are immediately impressed by the feeling of space and natural light. The modern kitchen and generous open plan living features polished boards and overlooks the private front courtyard. The Queen-size bedroom has wall-to-wall built in robes. The modern bathroom has a large shower with laundry facilities.

This secure apartment has modern video intercom. In addition, the apartment has access to a large store room.

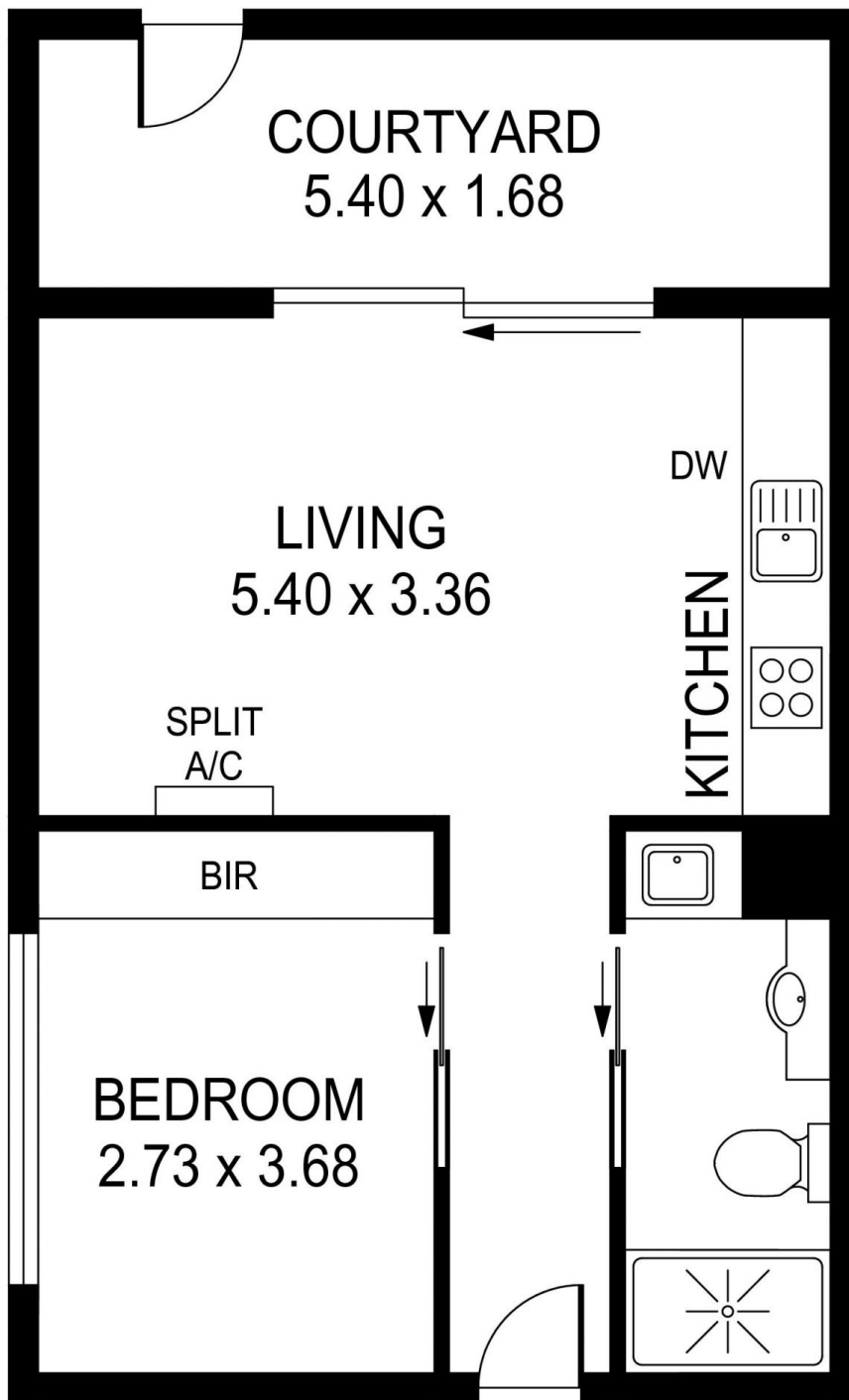
Superbly located overlooking North Adelaide's park lands, adjacent to the River Torrens, Adelaide Botanical Gardens

[For full version visit the website](https://www.foxrealestate.com.au/property/53-park-terrace-gilberton-sa/8098742)

**Type** : Apartment  
**Building Size** : 62 sqm  
**View** : <https://www.foxrealestate.com.au/property/53-park-terrace-gilberton-sa/8098742>



**Kirsty Davies**  
08 8267 4995



AREAS (Approx.)	m <sup>2</sup>
LIVING	38.95
COURTYARD	8.80
<b>TOTAL</b>	<b>47.75</b>

**53 Park Terrace, Gilberton**