



8 Edwin Terrace Gilberton SA

4  4  8 

Expressions of Interest close Wednesday 17th July at 12pm noon. (USP)

'Opus', a masterpiece of modern luxury situated in the heart of prestigious Gilberton. This striking mansion, standing regally on 4,085 sqm of unrepeatable land, is a testament to grandeur and timeless elegance.

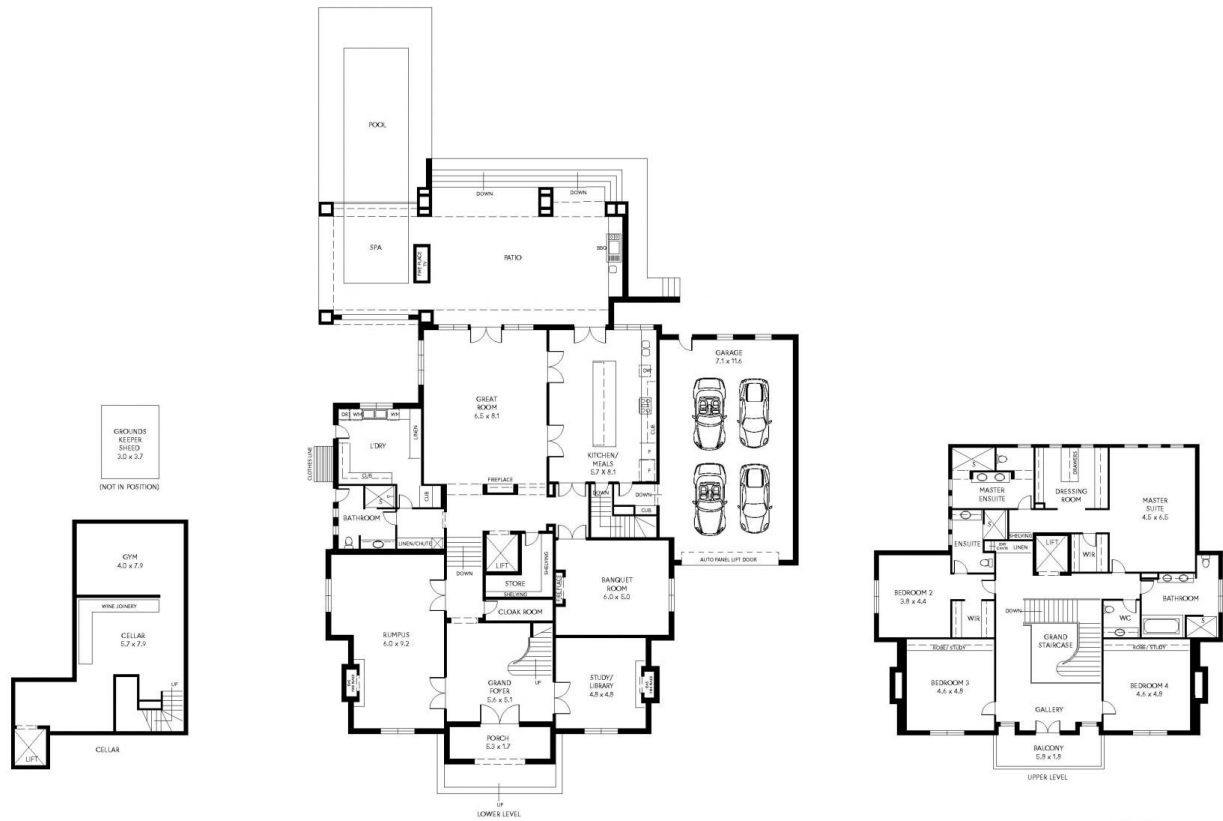
Crafted in 2018, 'Opus' is a rare amalgam of modern sophistication and old-world enchantment, boasting a French provincial/neo-classical design that exudes opulence at every turn.

Spanning 1,045 sqm of meticulously designed living space, 'Opus' features luxurious amenities including a resort inspired pool, tennis court, and more. Its solid construction

| | |
|----------------------|---|
| Price | : Contact Agent |
| Building Size | : 1045 sqm |
| Land Size | : 4085 sqm |
| View | : https://www.foxrealestate.com.au/property/8-edwin-terrace-gilberton-sa/8025276 |



Nick Pelvay
08 8267 4995



8 EDWIN TERRACE, GILBERTON

| | |
|---------------|-------------|
| GROUND LIVING | 350.50 SQM |
| UPPER LIVING | 257.57 SQM |
| GARAGE | 88.10 SQM |
| PORCH | 11.20 SQM |
| CELLAR | 82.50 SQM |
| PATIO/POOL | 234.40 SQM |
| STORE ROOM | 22.55 SQM |
| TOTAL | 1046.82 SQM |

PRODUCED BY CLIQUECREATIVE

