



42 Crompton Drive Wattle Park SA

5  2  2 

Best Offers By | Tuesday 5th March at 12pm (Unless sold prior)

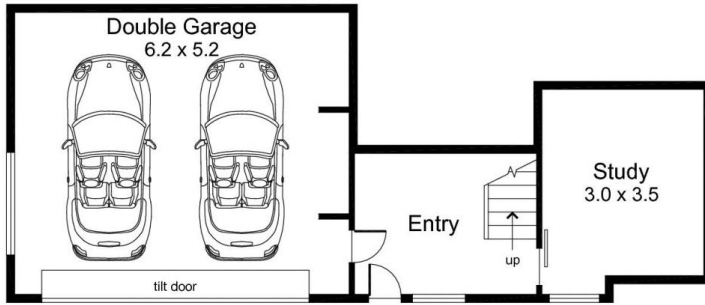
Sited on 743 sqm approx. the late 60's residence is blessed with lovely outlooks and offers ideal family accommodation catering for children of all ages. With 2 large living areas front and rear, the sitting room with wall of glass opens to private front balcony while the open plan kitchen, dining, family room overlooks the pool and private rear garden.

Other features include convenient ground floor home office (5th bedroom), main bedroom with dressing room and recently renovated ensuite, up to 4 additional bedrooms and main bathroom.

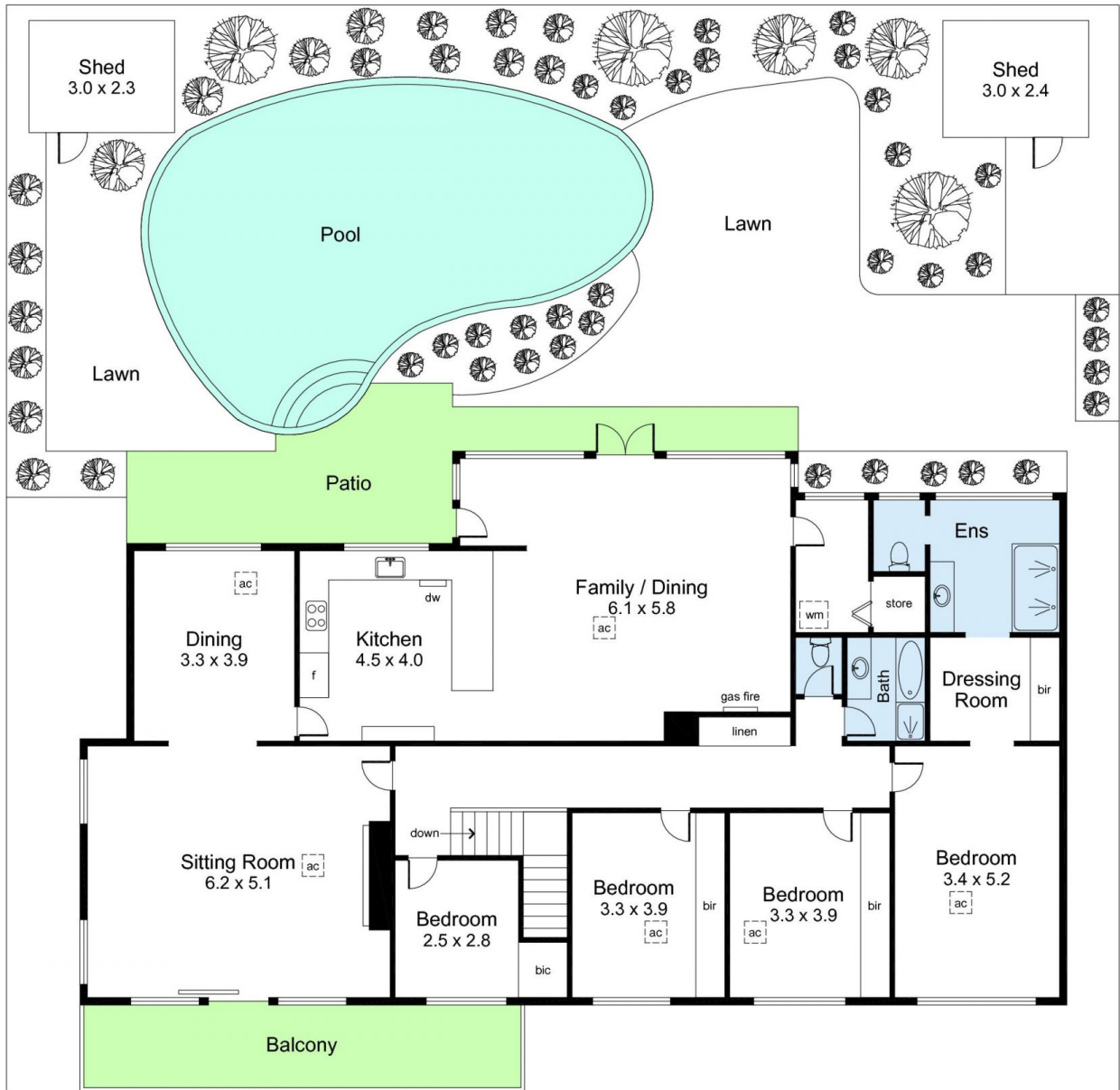
Land Size : 743 sqm
View : <https://www.foxrealestate.com.au/property/42-crompton-drive-wattle-park-sa/7916316>



Candy Bennett
0418 816 639



Lower Level



Upper Level

Area (Estimate only)	
Lower Living	20.0 m ²
Upper Living	198.9 m ²
Double Garage	32.6 m ²
Balcony	16.3 m ²
Shed	14.1 m ²
Total	281.9 m²



For illustrative purposes only.
All measurements are approximate