



2705/19 Frome Street Adelaide SA

2 🛏 2 🚿 1 🚗

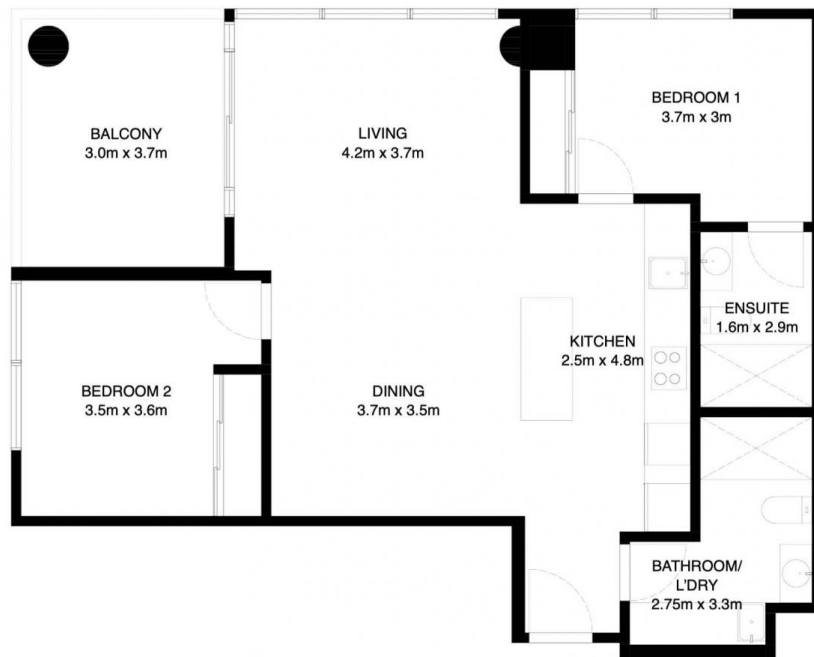
Sleek, elegant, and exclusive, Adelaidean Living Frome Street, epitomises premium lifestyle and embodies the very definition of convenient living. The very best of Adelaide is quite literally at your doorstep. Located in the highly desirable CBD East End between iconic Rundle St and North Terrace, Adelaidean stands proud as Adelaide's new tallest building and has already made a significant impact to the ever-growing Adelaide skyline. Its strong proximity to a variety of precincts, makes it convenient for those to enjoy breakfast Hutt street and/or Dinner on Rundle Street. Its for those who want to enjoy the city lifestyle, but enjoy privacy without compromising on living spaces.

The 270-degree sweeping views of the Park Lands and Adelaide Plains provide an escape from everyday living without having to leave your home.

Building Size : 10 sqm
View : <https://www.foxrealestate.com.au/property/270519-frome-street-adelaide-sa/7894186>



Nick Pelvay
 08 8267 4995



2705/19 FROME ST ADELAIDE SA 5000

Int: 81m²
Ext: 11.1m²
Total: 92m²

DISCLAIMER: PLANS SHOWN ARE FOR REPRESENTATIVE PURPOSES AND ARE NOT PART OF ANY LEGAL DOCUMENT.
ALL FIGURES ARE APPROXIMATE.