



#### 402/12-14 Wirra Drive New Port SA

2  2  1 

Located at New Port and adjacent to the Port River and a short distance to Semaphore Road, walk to Port Adelaide Plaza or maybe enjoy our city beaches at sunset. There are so many choices. This is a highly affordable elevated apartment that offers an excellent lockup and leave seaside lifestyle.

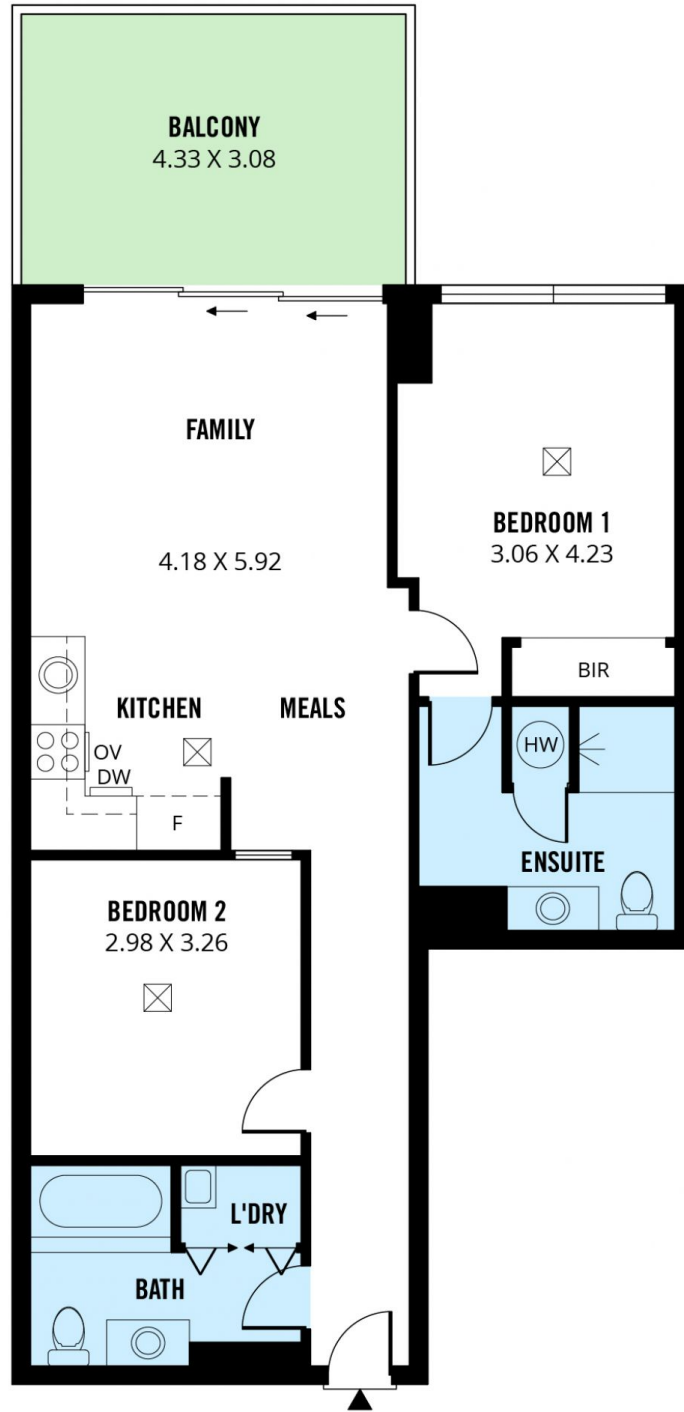
Positioned with panoramic views to the North from the double sized balcony, this property is perfect for entertaining; it comprises a spacious and light filled floor plan including an open plan kitchen, dining and living room with direct access to the balcony via commercial grade sliding doors.

There are two large bedrooms, the main with a walk-in robe and large ensuite. There's an excellent main bathroom,

**View** : <https://www.foxrealestate.com.au/property/40212-14-wirra-drive-new-port-sa/7793182>



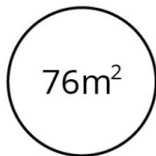
**Ken Bruce**  
0407 974 750



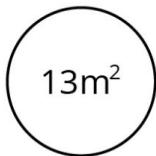
**402/12-14 WIRRA DRIVE, NEW PORT**



**TOTAL**



Living



Balcony



Scale in metres. This drawing is for illustration purposes only. All measurements are approximate and details intended to be relied upon should be independently verified. Produced by **The Fotobase Group**