



131 Stephen Terrace Walkerville SA

4  3  2 

Sophisticated modern day terrace close to Linear Park and the Walkerville & St Peters shopping hubs. High quality living with the emphasis on entertaining. Every creature comfort with many sustainable and noise nullifying features.

Including:

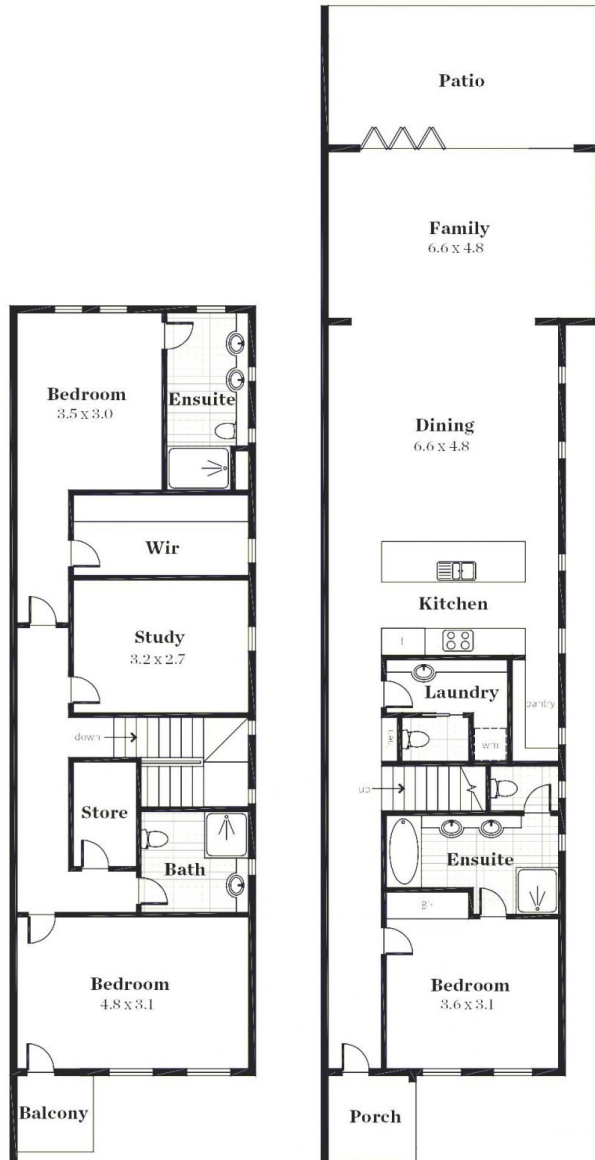
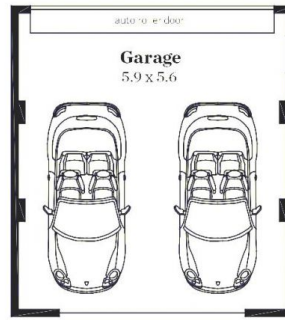
- Tasmanian sandstone
- Double glazing on windows
- Self managed community title
- \$377.81 for insurance over the community property only
- 7.9/10 star Nationwide House Energy Rating System (natHERS) for sustainability
- Video intercom & security system
- Gated rear lane access to double garaging
- Daikin ducted R/C A/C throughout

Land Size : 222 sqm

View : <https://www.foxrealestate.com.au/property/131-stephen-terrace-walkerville-sa/6738055>



Andrew Fox
08 8267 4995



Area (Estimate only)	
Lower Living	111.71 m ₂
Upper Living	86.93 m ₂
Garage	39.50 m ₂
Entertainment	18.55 m ₂
Balcony	2.91 m ₂
Total	259.60 m₂

