



188 Barton Terrace West North Adelaide, SA



3



2



1

Classic charm, contemporary renovation.

Very rare, attached stone residence offers single level accommodation and has been cleverly redesigned to deliver all the mod cons within its elegant Victorian facade. Original character combines with stylish renovation to provide outstanding contemporary living. The easy flowing floorplan and modern ambience are ideal for an enjoyable, relaxed lifestyle.

Enjoy this peaceful slice of North Adelaide with the golf course, Linear Park and Plant 4 on the doorstep and the Flying Fig around the corner.

Council rates: \$3,392.70 pa

Water rates: \$344.28 pq

ES Levy: \$238.10 pa

Year Built: 1890

All information provided (including but not limited to the property's land size, floor plan and floor size, building age and general property description) has been obtained from sources deemed reliable, however, we cannot guarantee the information is accurate and we accept no liability for any errors or oversights. Interested parties should make their own enquiries and obtain their own legal advice. Should this property be scheduled for auction, the Vendor's Statement can be inspected at our office for 3 consecutive business days prior to the auction and at the auction for 30 minutes before it starts.

Price: SOLD - FOX



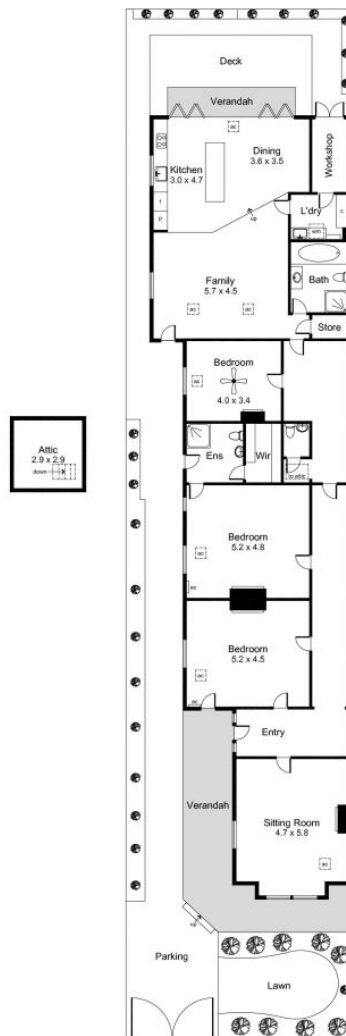
Candy Bennett

candy@foxrealestate.com.au
0418 816 639



Edwina Lehmann

edwina@foxrealestate.com.au
0414 607 218



Area (Estimate only)	
Living	218.8 m ²
Verandah	33.3 m ²
Deck	16.8 m ²
Verandah	8.4 m ²
Total	277.3 m²

For illustrative purposes only.
All measurements are approximate