



8 James Street Gilberton, SA

5 2 3

Character Sandstone Return Verandah Bungalow sited on a huge 1,059sqm approx. al

Retaining beautiful character features including high decorative ceilings, open fire places and polished jarrah floor boards, this distinguished family residence offers endless possibilities.

Comprising a front sitting room plus 4 generous bedrooms, the master positioned to the rear of the home with ensuite and WIR features double glass doors that open to the paved entertaining area and onto the lush garden beyond.

A spacious, open plan kitchen/dining/family has a provincial feel with black and white tiled flooring, white timber ceilings and a wood combustion fire. Large picture windows overlook the rear garden and double doors open to the paved outdoor entertaining area with pergola.

Special features:
- Plantation shutters

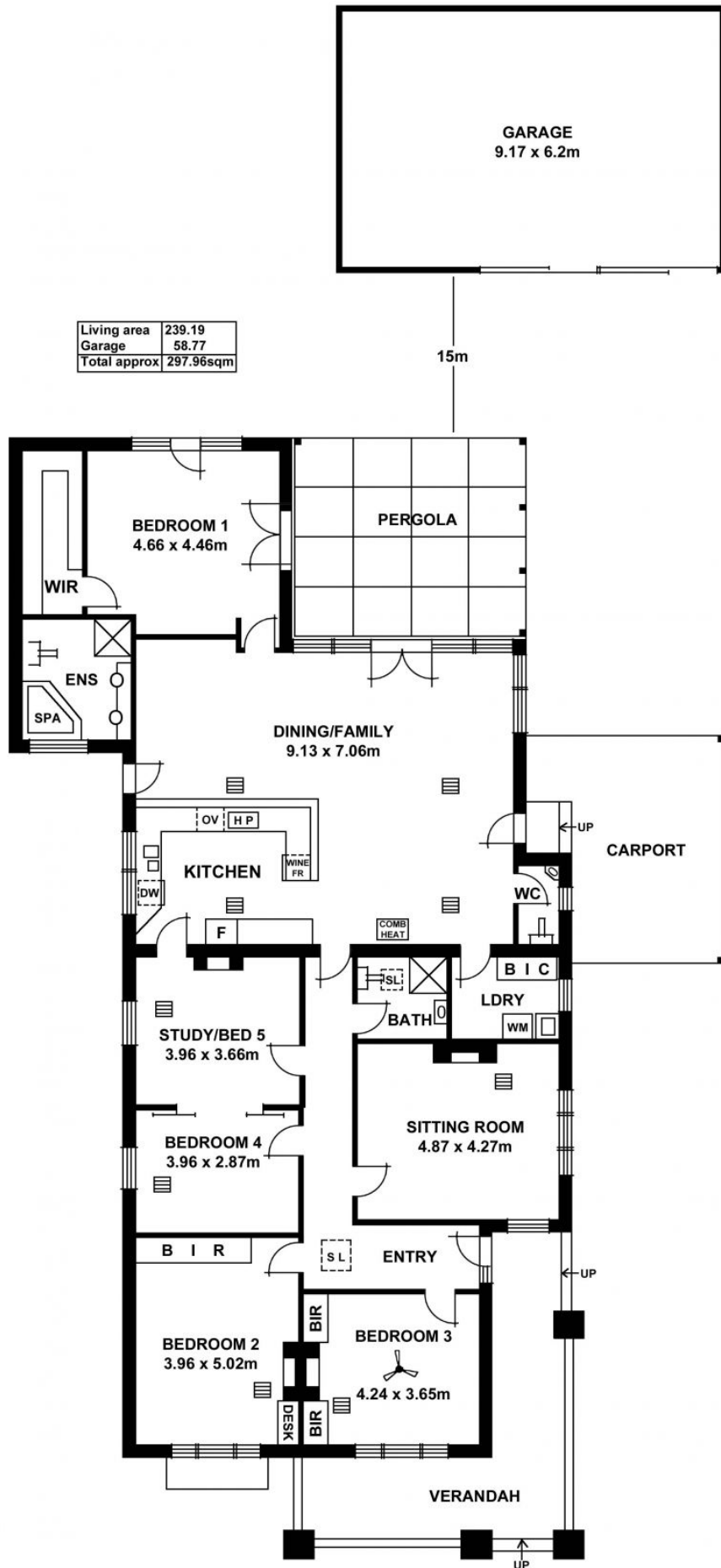
Council rates: \$2,727.55 pa
Water rates: \$343.73 pq
ES Levy: \$571.15 pa
Year Built: 1920

Disclaimer:

Price: SOLD - FOX



Andrew Fox
afox@foxrealestate.com.au
0418 832 227



8 James Street

Gilberton, SA